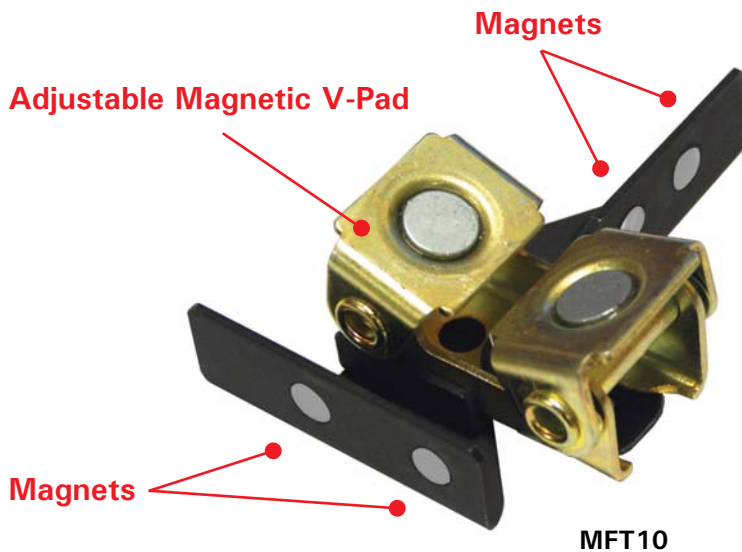
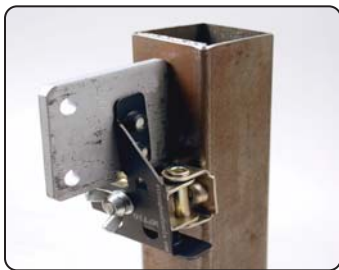


The *better, faster, safer* way to Hold tabs in place for Tack Welding!

- » Hold tabs, or any small metal pieces, parallel or perpendicular to the substructure.
- » The Adjustable Magnetic V-shape base adjusts for different shapes: round, flat, or angled metal surfaces.



Perpendicular tab



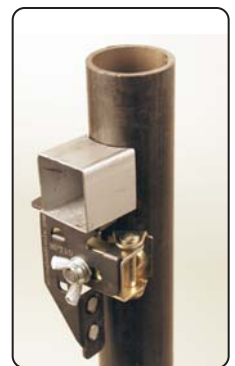
Parallel Tab on square tube



Angle Iron on large pipe



Positioning handle



Square tube section

Part No.	Dimension	Weight	List Price
MFT05	3-1/5" x 2-2/5" x 1-1/8" 80 mm x 60 x 30	0.4 lbs 0.2 kg	\$ 8⁹⁹
MFT10	4" x 3" x 1-1/4" 100 mm x 76 x 32	0.5 lbs 0.2 kg	\$ 9⁹⁵

Distributed By: